

# Restoration Strategies: Design and Construction Update

Lucine Dadrian, P.E.  
Section Administrator  
Operations, Engineering and  
Construction Division

15th Annual Public Meeting on the Long-Term  
Plan for Achieving Water Quality Goals for  
Everglades Protection Area Tributary Basins  
February 23, 2018



# L-8 Flow Equalization Basin





G-538 Inflow Structure



All Cells: -21.5' NGVD

Feb 9, 2018





All Cells: -21.5' NGVD

Feb 9, 2018

G-539 Pump Station



# L-8 Flow Equalization Basin

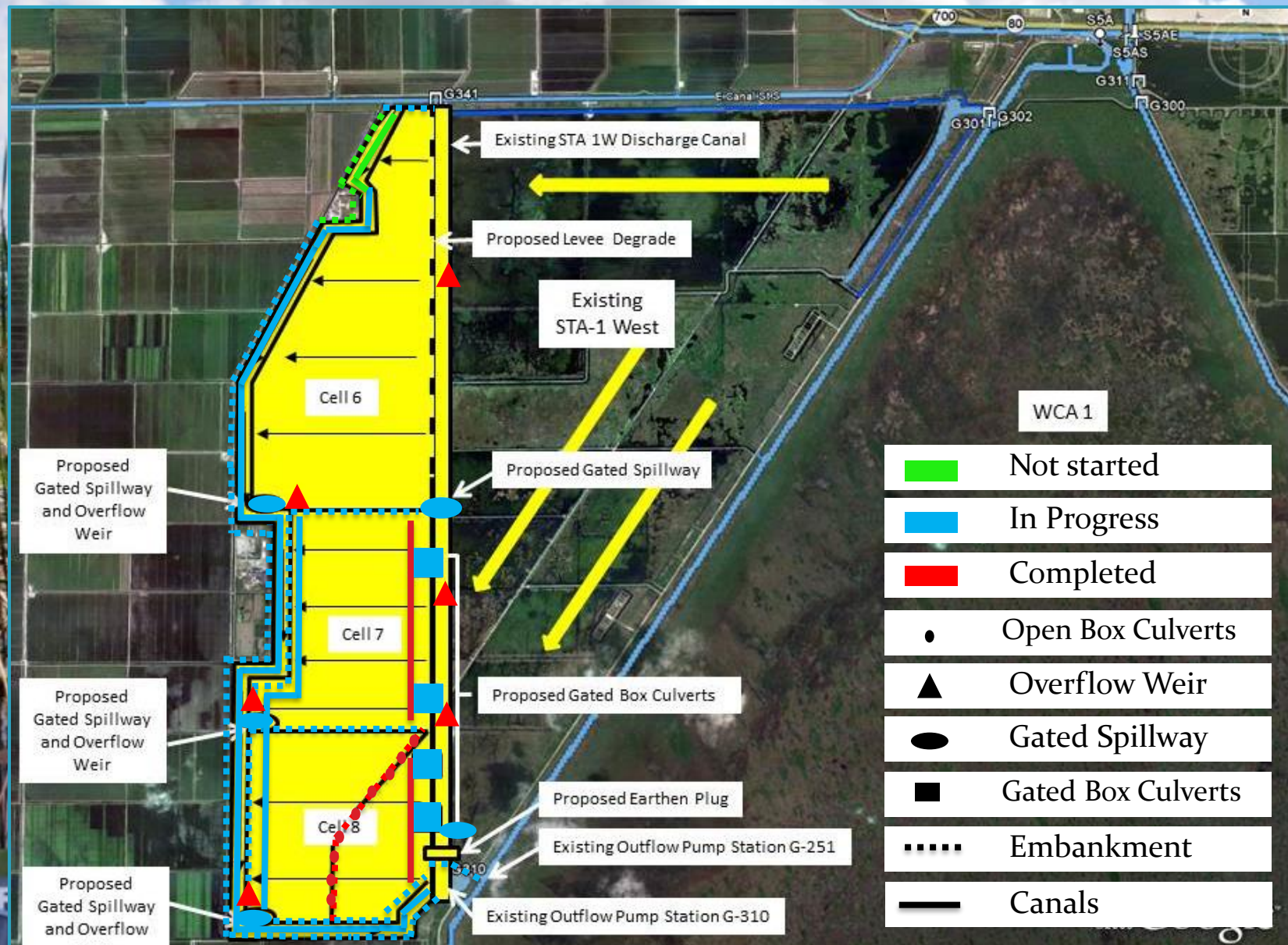
- **Governing Board Approval** Complete
- **Notice to Proceed** Complete
- **Preliminary Design (Revetment)** Complete
- **Preliminary Design (Pump and Inflow)** Complete
- **Final Design (Revetment)** Complete
- **Final Design (Pump and Inflow)** Complete
- **Revetment Construction** Complete
- **Substantial Completion** Jun 19, 2017
- **Final Completion** Dec 18, 2017

# L-8 Flow Equalization Basin

| Milestone                        | Deadline   | Status   |
|----------------------------------|------------|----------|
| Submit state and federal permits | 1/31/2014  | Complete |
| Construction status report       | 3/1/2014   | Complete |
| Construction status report       | 3/1/2015   | Complete |
| Completion of construction       | 12/31/2016 | Complete |
| Long term operations commence    | 12/31/2022 | Pending  |

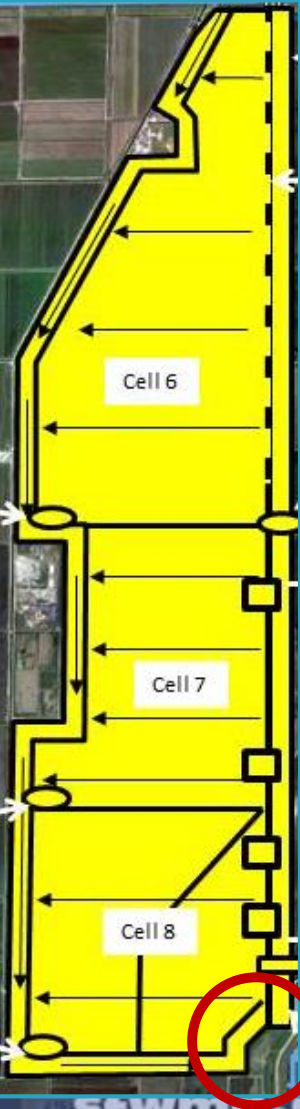


# STA-1W Expansion #1





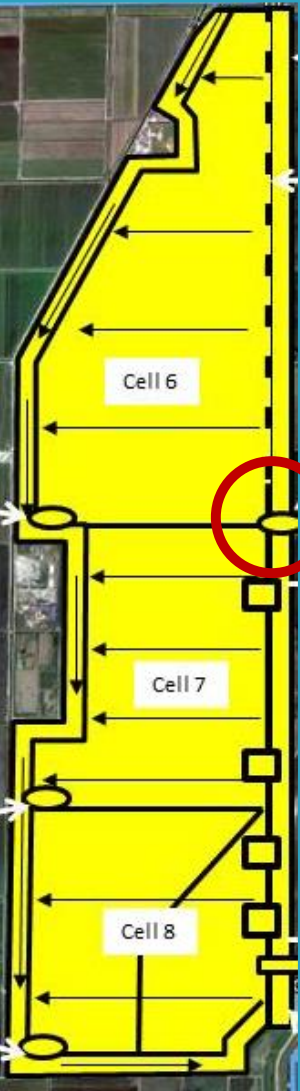
# STA-1W Expansion #1



**Canal and Embankment Construction**



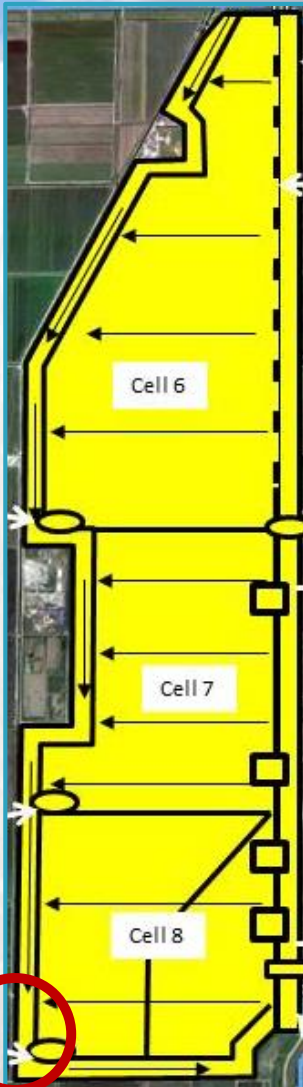
# STA-1W Expansion #1



G-729 Construction



# STA-1W Expansion #1



**G-734, G-735C, & West Levees and Canals Construction**



# STA-1W Expansion #1

## Design and Construction Schedule

- |                            |                    |
|----------------------------|--------------------|
| • Hydraulic Study          | Complete           |
| • Preliminary Design       | Complete           |
| • Intermediate Design      | Complete           |
| • Final Design             | Complete           |
| • Governing Board Approval | Complete           |
| • Notice to Proceed        | Complete           |
| • Substantial Completion   | September 20, 2018 |
| • Final Completion         | December 14, 2018  |

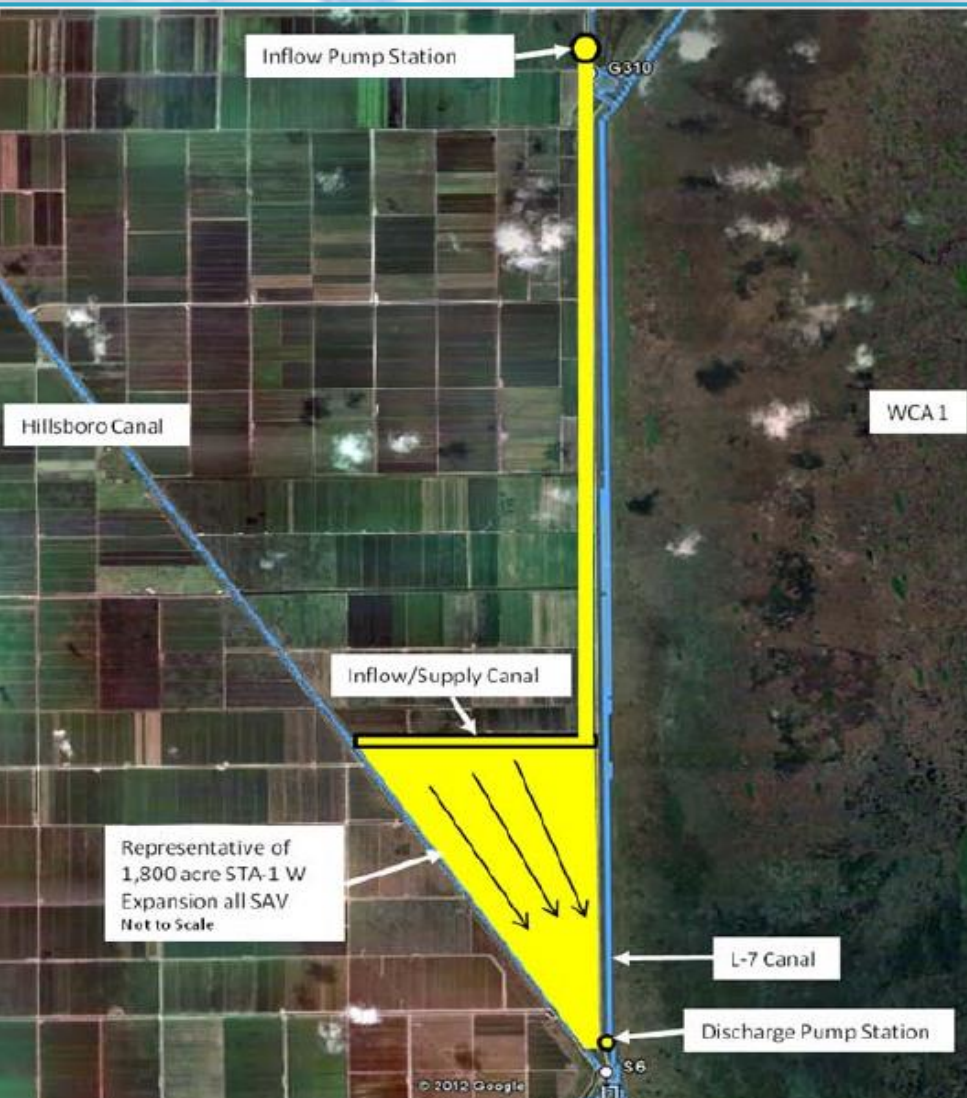


# STA-1W Expansion #1

| Milestone                                  | Deadline   | Status   |
|--|------------|----------|
| Complete land acquisition                  | 9/30/2013  | Complete |
| Initiate design                            | 9/30/2013  | Complete |
| Submit state and federal permits           | 7/30/2014  | Complete |
| Complete design                            | 7/30/2015  | Complete |
| Initiate construction                      | 1/31/2016  | Complete |
| Construction status report                 | 3/1/2017   | Complete |
| Construction status report                 | 3/1/2018   | Pending  |
| Completion of construction                 | 12/31/2018 | Pending  |
| Initial flooding and optimization complete | 12/30/2020 | Pending  |



# STA-1W Expansion #2



| Project           | Acres | Acres of Effective Treatment |
|-------------------|-------|------------------------------|
| Overall Expansion | 6,727 | 5,900+                       |
| Expansion #1      | 4,600 | 4,300                        |
| Expansion #2      | 2,127 | 1,600+                       |



# STA-1W Expansion #2



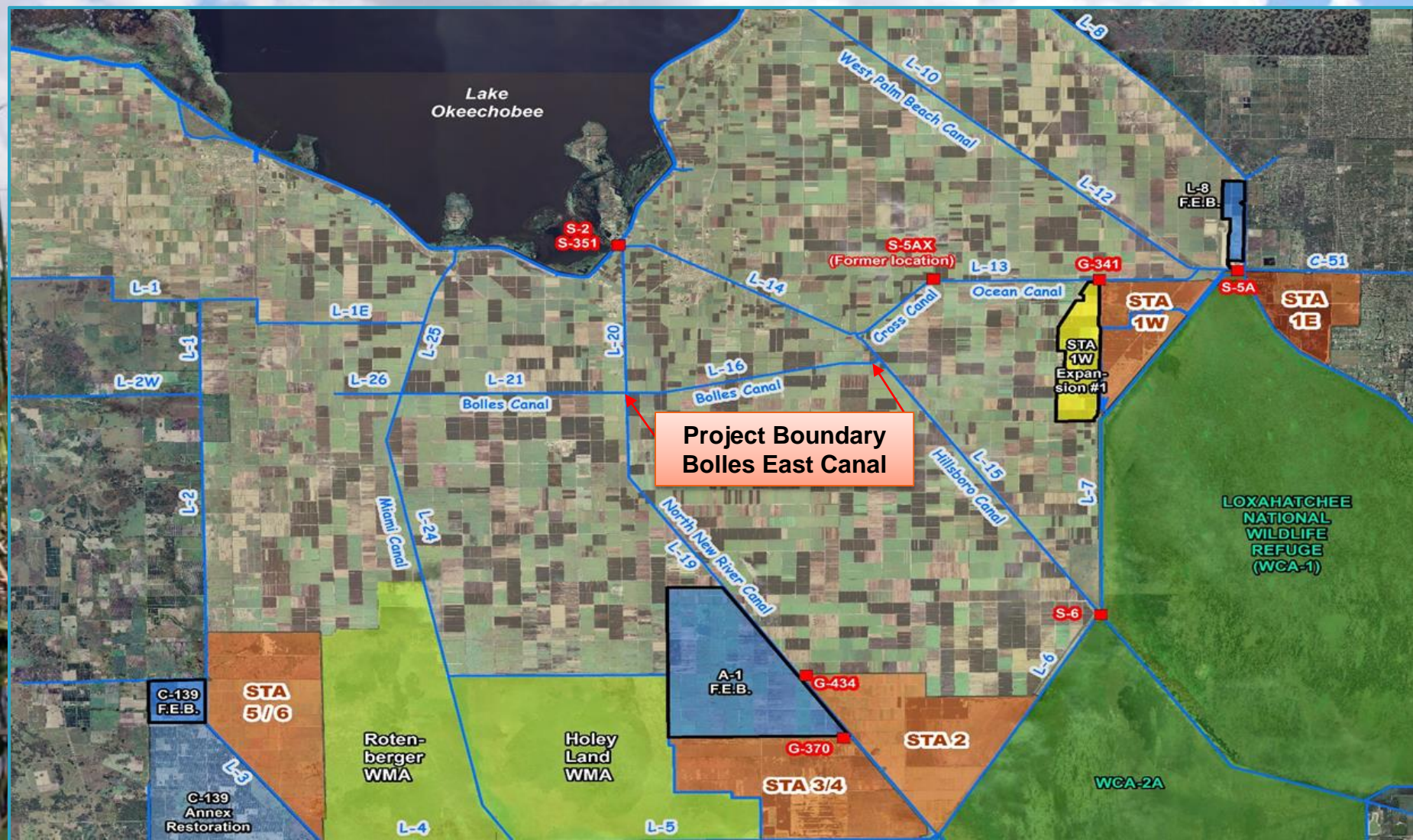


## STA-1W Expansion #2

| Milestone                                  | Deadline   | Status   |
|--|------------|----------|
| Complete land acquisition                  | 3/31/2018  | Complete |
| Initiate design                            | 10/01/2018 | Pending  |
| Submit state and federal permits           | 8/01/2019  | Pending  |
| Complete design                            | 7/31/2020  | Pending  |
| Initiate construction                      | 11/30/2020 | Pending  |
| Construction status report                 | 3/1/2021   | Pending  |
| Construction status report                 | 3/1/2022   | Pending  |
| Completion of construction                 | 12/31/2022 | Pending  |
| Initial flooding and optimization complete | 12/31/2024 | Pending  |

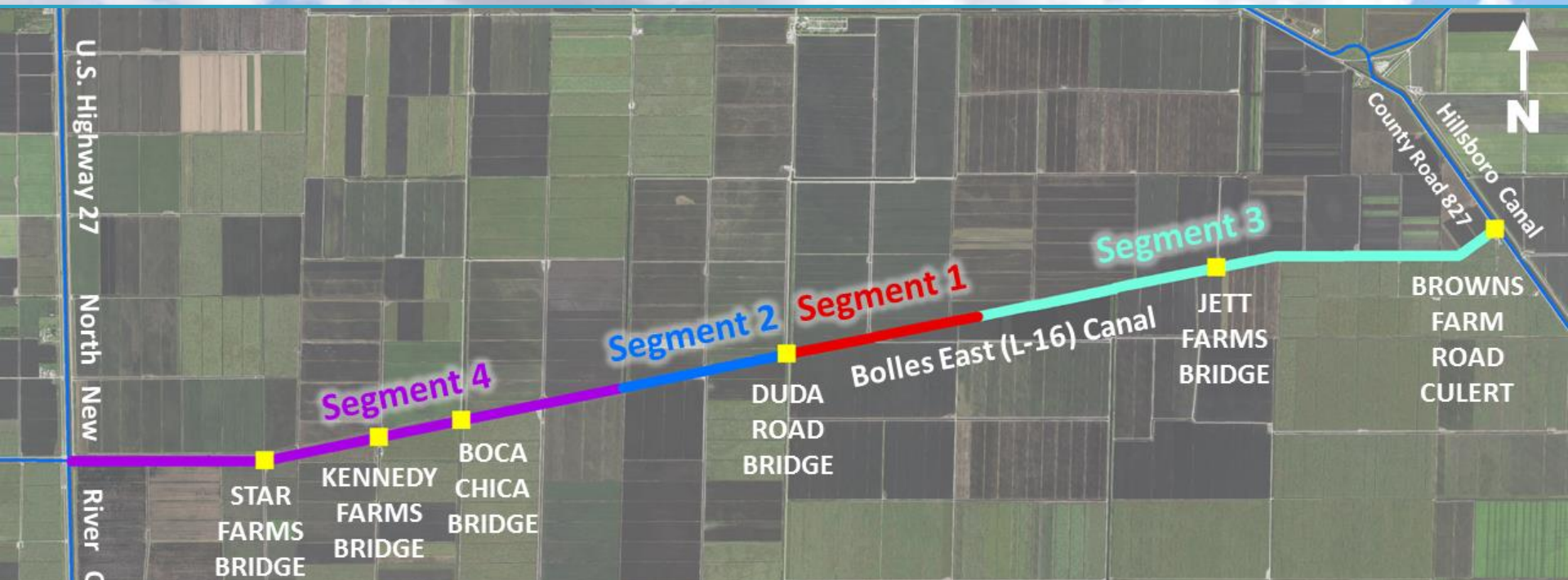


# G-341 Related Conveyance Improvements Bolles East Canal





# G-341 Related Conveyance Improvements Bolles East Canal



- **Segment 3** - Consists of 3.3 miles of the eastern end of the Bolles Canal. Design completed in April 2017. Construction awarded at May 2017 GB to Kemron Environmental. Construction is on-going.
- **Segment 4** – Design of remaining 3.5 miles of the western end of the Bolles Canal
- **Bridge Replacements** – Working with Landowners on incorporating bridge replacements in Segments 3 and 4. Reduced the western number of bridges from 3 to 2 bridges. Star Farms and Kennedy will share a bridge.



# Final Section of Segments 1 and 2



**After Construction**

**Before Construction**





# Excavation of Segment 3





# G-341 Related Conveyance Improvements Bolles East Canal

| Project Phase                  | Segment 1     | Duda Bridge* | Segment 2     | Segment 3    | Segment 4      |
|--------------------------------|---------------|--------------|---------------|--------------|----------------|
| Design Completion              | Dec 14, 2014  | Jan 2016     | Sept 29, 2015 | Mar 21, 2017 | Start Jun 2017 |
| Construction Notice to Proceed | Sept 14, 2015 | Jun 2016     | Aug 16, 2016  | Nov 20, 2017 | TBD            |
| Substantial Completion         | Sept 13, 2016 | Aug 2016     | Mar 31, 2017  | Dec 19, 2018 | TBD            |
| Final Completion               | Nov 12, 2016  | Dec 2016     | May 30, 2017  | Feb 17, 2019 | TBD            |
| (*) Cost-share with Duda       |               |              |               |              |                |



# G-341 Related Conveyance Improvements

| Milestone                        | Deadline   | Status   |
|----------------------------------|------------|----------|
| Complete land acquisition        | 9/30/2021  | Pending  |
| Initiate Design                  | 10/1/2020  | Complete |
| Submit state and federal permits | 8/1/2021   | Complete |
| Complete design                  | 7/31/2022  | Pending  |
| Initiate construction            | 11/30/2022 | Complete |
| Construction status report       | 3/1/2023   | Pending  |
| Construction status report       | 3/1/2024   | Pending  |
| Completion of construction       | 12/31/2024 | Pending  |



# Restoration Strategies Project Summary

| Project                               | Construction Completion Deadline | Status               |
|---------------------------------------|----------------------------------|----------------------|
| A-1 Flow Equalization Basin           | 7/30/2016                        | Completed 7/24/2015  |
| S-5AS Modifications                   | 9/30/2016                        | Completed 5/28/2016  |
| L-8 Flow Equalization Basin           | 12/31/2016                       | Completed 06/21/2017 |
| L-8 Divide Structure (G-541)          | 9/30/2018                        | Completed 7/7/2016   |
| S-375 Expansion (G-716)               | 12/31/2018                       | Completed 4/3/2017   |
| STA-1W Expansion #1                   | 12/31/2018                       | Pending              |
| G-341 Related Conveyance Improvements | 12/31/2024                       | Pending              |



# Questions